



BASE4

BASE4  
3858 GLADES ROAD, #31  
BOCA RATON, FLORIDA 33434  
1.720.72BASE4 www.base-4.com

SEAL



GARRY VERMAAS, PhD, PE  
9011 EDGEWATER BEND  
PARKLAND, FLORIDA, 33076



ISSUE:

Issued for Permit  
08.05.2016

PROJECT: 16-018

Hampton Inn & Suites

New Stanton, PA 15672

OWNER:

Stanton Hospitality LLC

52 Blueberry Lane,  
Grove City, PA 16127

No.	Issue Date	Project Status

DATE 2016.08.05

DRAWN BY HAB

CHECKED BY GWV

SCALE AS NOTED

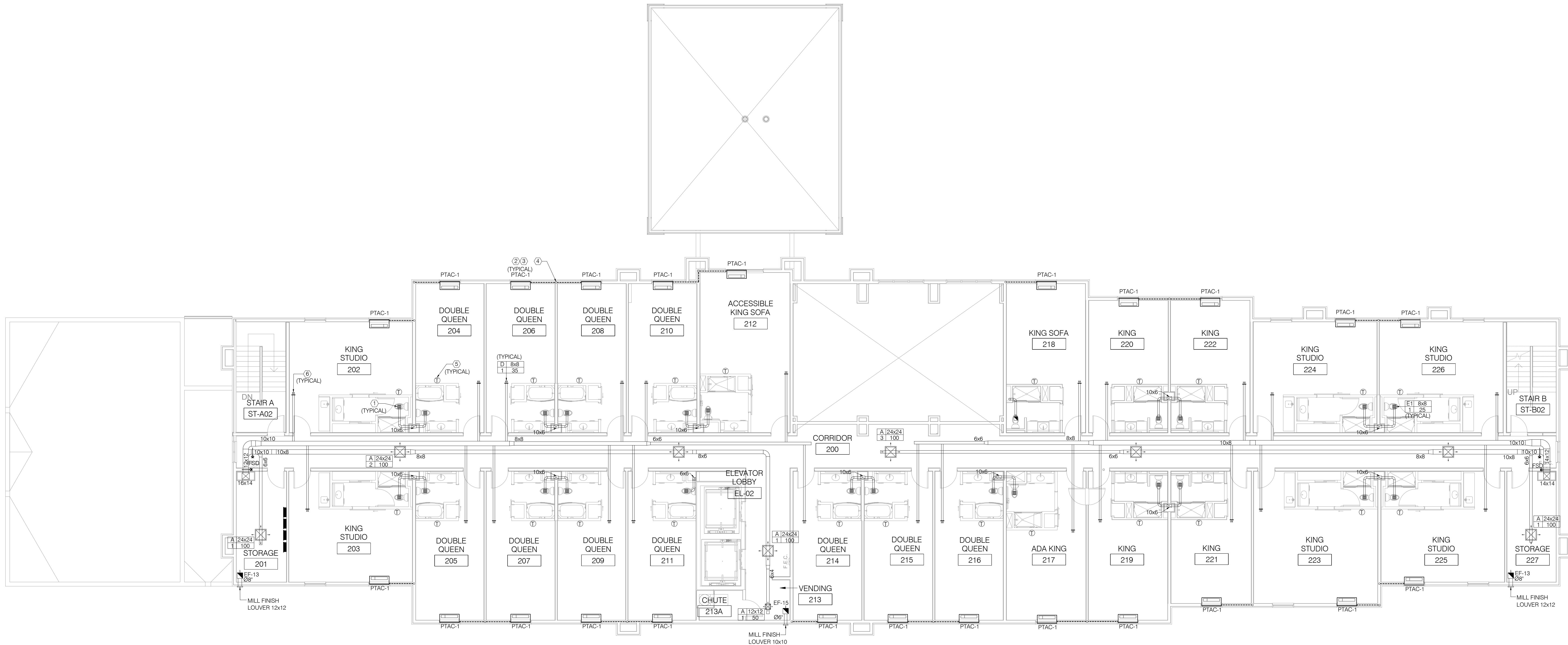
PROJECT NO. B4-67-1603

SHEET NAME

SECOND FLOOR  
MECHANICAL PLAN

SHEET NO.

M202



01 SECOND FLOOR MECHANICAL PLAN  
SCALE: 1/8" = 1'-0"

- KEY NOTES:
- EXHAUST SHALL BE EXTENDED AT LEAST 20" VERTICALLY IN EXHAUST RISER REFER TO REVERSE
  - NO OUTDOOR AIR ALLOWED TO BE BROUGHT IN TO ROOM THROUGH PTAC UNITS. FRESH AIR CONTROL ARM TO BE CLOSED. TYPICAL ALL PTAC UNITS
  - ELBOW CONDENSATE DRAIN CONNECT TO NEAREST CONDENSATE RISER. TYPICAL FOR ALL PTAC UNITS UNLESS NOTED OTHERWISE
  - 1-1/4" CONDENSATE RISER UP. SEE UPPER FLOOR PLANS FOR CONTINUATION. TYPICAL FOR ALL PTAC UNITS CONDENSATE DRAINAGE UNLESS NOTED OTHERWISE
  - MECHANICAL CONTRACTOR TO CO-ORDINATE T-SLOT LOCATION AS PER ID
  - ALL GUESTROOM OA DIFFUSERS SHOULD BE AMERICAN ALDES CSR R11 CONSTANT SUPPLY REGISTER WITH INTEGRATED CAR-11 CONSTANT AIRFLOW REGULATOR